

September 2014

Calendar	1
President's Message	2
September & October Brown Bag Lunches.....	3
Voter Education Coalition	2
Lawrence Pedestrian Coalition.....	3
Candidates' Potluck	3
Library Board Meeting	3
Highlights of the Board Meeting	5
Land Use Committee Report	6
Fracking Glossary	7
Welcome New Member!	8
Just for Fun	8
Membership Form	9



Famous Hispanic Americans



League of Women Voters
P.O. Box 1072
Lawrence, KS 66044-1072



The VOTER

Bulletin of the LWV of Lawrence-Douglas County, KS

PO Box 1072 • Lawrence KS 66044-1072

The League of Women Voters is a non-partisan political organization encouraging the informed and active participation of citizens in government and influencing public policy through education and advocacy.

President:	Cille King	president@lawrenceleague.com	
Membership:	Margaret Arnold	membership@lawrenceleague.com	
Voter Editor:	Ruth Lichtwardt	lightwatcher@gmail.com	
Local League	www.lawrenceleague.com	www.facebook.com/lwvldc	www.twitter.com/lwvldc
State League:	www.lwvk.org	lwv.kansas@gmail.com	785-234-5152
National League	www.lwv.org		202-429-1965

League Calendar

Please note: Important 2014 Election Dates are on page 2

Saturday, September 20th	7 - 9 pm	Land Use Committee Meeting. <i>Community Mercantile Meeting Room, 901 Iowa St.</i>
Thursday, September 25th	11:30 am	Brown Bag Lunch: Fracking. <i>Lawrence Library Auditorium, 707 Vermont.</i> Speaker: Geologist Rex Buchanan. Feel free to bring a friend.
Thursday, September 25th	7:30 pm	KTWU: (first airing with multiple repeat airings): "Your Voice. Your Vote '14" , 7:30PM. United States Senate Race 2014: 20-30 minute interviews back to back with Senator Pat Roberts and Greg Orman. (Sponsored by the LWV-TSC and KTWU).
Thursday, September 25th	7:30 - 9 pm	Economic Development Policy Study kickoff. <i>912 Holiday Drive.</i> Study participation is open to the general public.
Thursday, October 9th	7 - 9 pm	LWV-DC Board Meeting. <i>Lawrence Public Library, Meeting Room B, 707 Vermont.</i> All League members are invited to attend.
Friday, October 10th	9:00 pm	VOTER Submission Deadline. Please send submissions to lightwatcher@gmail.com .
Tuesday, October 14th	7 - 8:30 pm	Forum on the Police Facility Sales Tax Increase. <i>Lawrence Library Auditorium, 707 Vermont.</i>
Wednesday, October 22nd	7:30 pm	KTWU (first airing with multiple repeat airings): "Your Voice, Your Vote '14" . 7:00PM-8:00PM and 9:00PM-10:00PM. Secretary of State Kris Kobach and Jean Schodorf. Candidate Forum. (Sponsored by KTWU and Washburn University Department of Political Science.)
Thursday, October 23rd	7:30 pm	KTWU (first airing with multiple repeat airings): "Your Voice, Your Vote '14" . 7:30PM. Kansas Governor's Race 2014. 20 minute interviews back to back with Governor Sam Brownback, Keem Umbehr and Paul Davis. (Sponsored by the LWV-TSC and KTWU)



President's Message



The race is on – less than 4 weeks to register voters for the November 4 general election. We have an ambitious schedule for these final weeks before the Tuesday, October 14 final day to register voters:

Sunday afternoons; 1:30 – 5:30 pm at the Lawrence Public Library. Tuesday and Thursday, September 16 and 18, 1-3 pm each day at Brandon Woods. National Voter Registration Day, Tuesday, September 23 – we hope to do at least two locations. Saturdays, September 20, 27 and October 11 in the afternoons, On the Rocks on Massachusetts St. Sunday, October 12, noon – 5 pm, Lawrence Festival of Cultures, South Park. All schedules are dependent upon volunteers. We will team an experienced member with those learning. You can email: cilleking@gmail.com or call 785-766-6992 to volunteer.

We find invaluable: laptops (where there is an electrical outlet) or smart phones to check voter's status with the Kansas Secretary of State website. We find people who thought they were registered, but aren't; people who thought they weren't, but are; people who aren't sure which name or address they are registered or their polling place. Thank goodness – we can check. It's very rewarding to have someone say (as we've heard lately): 1) I'm so glad you're here – I wasn't sure how I was going to get this done. 2) Now I won't have to keep driving to Olathe to vote. 3) We just moved and wasn't sure what we needed to do. 4) You are a godsend.

The County Clerk's office has sent us an updated "Voters in Suspense" list. Over 700 Douglas County residents have tried to register to vote, but haven't provided their proof of citizenship – usually a birth certificate or passport. Starting last fall, the League has called (few people have given their phone numbers) or emailed (KU people where we can find an email address), but we get few people to call back or respond to our emails. There have been some success stories. One was written up by Scott Rothschild for the Lawrence Journal World on Monday, September 1: <http://www2.ljworld.com/news/2014/sep/01/voter-advocacy-group-trying-contact-people-whose-v/>. We thank member Carol Klinknett (brand new board member) for calling this wasn't-yet-registered voter, so she could finish her registration.

Since the August Voter, we have registered voters at the Library, the Busker's Festival, On the Rocks, and the Naturalization Ceremony at the Dole Center, for a total of 463 registrations this year.

Vote411.org now has the general election candidates listed. You can go to the website: vote411.org, enter your address, and get the list for all the races and candidates on your ballot. If you are a candidate (we have candidates as members in League) or are associated with a campaign and you or your favorite candidate hasn't responded to our questionnaire, please do so, or encourage your candidate to do so. The LWV of Kansas has paid \$5000 to have access to this site for this election season – make it worth it. Pass this site information on to your family, friends, and associates.

Thank you to all our members who have helped with this election season.

- Cille King

2014 ELECTION DATES:

Tuesday October 14:	Last day to register for the Nov 4 general election
Wednesday October 15:	Advance voting begins
Monday November 3, Noon:	In-person advance voting ends
Monday November 3, Midnight:	Deadline to present proof of citizenship for those on the suspended voter list.
Tuesday, November 4, 7 am-7 pm:	GENERAL ELECTION

September Brown Bag Lunch: Fracking

Brown Bag on Fracking with guest speaker geologist Rex Buchanan. 11:30-12:00: Discussion led by Marlene Merrill and Cille King. 12:00: Rex Buchanan speaks on the subject and its implications. Place: Lawrence Library Auditorium. Free and open to the public. Please bring friends to this timely discussion. A Fracking Glossary is on page 7. Many thanks to sponsor Laird Noller! www.lairdnoller.com

October Brown Bag Lunch: Guns - What are the Laws?

A great deal of ambiguity and sometimes confusion accompanies the application of recent rules for carrying guns. Even business owners are not always sure of their policies. We hope to educate ourselves and others in October by inviting representatives of the county attorney's office and the Lawrence and KU police forces to present us with accurate information. We will gather on October 16, the third Thursday of the month, at the Watkins Community Museum of History. Please plan to join us and bring guests. Informal discussion begins at 11:30 a.m. with the program set for 12:00.



Voter Education Coalition Report

Voter Education Coalition (VEC) met on Sep. 4, 2014 at the Lawrence Chamber of Commerce. Attending: Patrick Wilbur and Scott Criqui, co-chairs, CJ Brune, Carol Klinknett, Lindsey Slater, Julie Hack, Judy Bellome, James Dunn and Cille King.

A forum for the Police Facility Sales Tax will be on Tuesday, Oct. 14, 2014 at the Lawrence Public Library Auditorium, 7 – 8:30 pm. The forum will start with a brief technical description of the ballot question. Then people on the pro (Friends of Lawrence Police, Inc) and con sides of the issue will state the case for and against and answer questions previously prepared and from the audience. The forum will be taped by Channel 6 and made available at a later date.

A forum with legislative candidates from KS House Districts 10, 42, and 46 will be scheduled, probably early to mid October. Check for updates on our website: lawrenceleague.com and look for league emails.

Lawrence will not have a forum for the 2nd congressional district race. Lynn Jenkins, Margie Wakefield and Chris Clemmons will participate in forums held in Topeka and broadcast on KTWU, Oct 29, 7 pm and 10 pm. There are also plans for a forum in Eudora for these candidates, date unknown.

The VEC's facebook page: <https://www.facebook.com/vecdgks>, has received more likes, giving the VEC more exposure. The VEC plans to post candidate responses to questions.

Constitutional amendment on the November ballot allowing raffles for non-profits: an educational paper will be developed and made available at VEC events.

KU has a couple of non-partisan groups that are encouraging voter participation: Project Vote and The Future Majority. Patrick will contact the groups to see if they want to partner.

Lawrence Pedestrian Coalition Report

City Commissioner Robert Schumm attended the Coalition's meeting on September 10. He reported that the City staff is preparing a Capital Improvements Program for 2016-2021. It will include non-motorized transportation. Expenditures between \$200,000 and \$400,000 a year are being considered.

Charlie Bryan reported on the Safe Routes to School project that will begin soon. The goal is to develop a comprehensive, citywide plan that enables and encourages children, including those with disabilities, to walk and bike to and from school. There will be a public presentation on "Why Safe Routes to School Matters" on September 29 from 7 to 8 p.m. at the Community Health Facility, 200 Maine Street. Those interested in participating in the project as a community volunteer may attend a course on September 30 from 8:30 a.m. to 5 p.m.

It is proposed to stage a community summit on non-motorized transportation. This would be an all-day conference open to the public which would



include speakers and time for discussion. Laura Routh is drafting a letter asking for support from local organizations. At its meeting the following day, the League's Board agreed to be a sponsor of the event. The Lawrence Association of Neighborhoods has also agreed. The summit

will probably be held in March 2015, prior to the next election to the City Commission.

- Alan Black

Candidates' Potluck

More than 100 people braved the 101 degree temperatures on August 21st and turned out for the Candidates' Potluck at Centennial Park, which League cosponsored with the Lawrence Voter Education Coalition. We enjoyed song stylings of the Alferd J. Packer Memorial String Band (including League member Lauralyn Bodle on the fiddle), dined on pulled pork from Biemer's Barbeque and more deserts than you shake a candidate at, listened to two-minute stump speeches from 16 candidates for office (or their representatives), and then had a chance to grill them ourselves during an hour of so of "speed dating," with several candidates at different tables.

Observer Report: Library Board Meeting

Board Members Present: Joan Golden, Chair; Fran Devlin, Brady Flannery, Judy Keller; Ursula Minor, David Vance, Kevin Vick.

Library Staff: Brad Allen, Director; Sherri Turner, Assistant Director; Kathleen Morgan, Library Foundation Director.

Guests: Dennis Odgers, BA Green; Jan Conrad, Friends of the Library; Elinor Tourtellot, League of Women Voters.

Renovation/Expansion update

Dennis Odgers with BA Green Construction reported that they are applying sod to the Plaza area outside the library to be completed before the September 6th Dr Bob Program. During this program,

the Butterfly Garden will be dedication in Sandy Nosaman's honor.

Library Director's Report

Director Brad Allen reported that the temporary library on New Hampshire closed and the new Library opened with nearly 12,000 people attending on Saturday, July 26 and 4,000 on Sunday, July 27. From July 26 to August 14, the library checked out 101,211 items, saw 66,710 people walk through the doors and created 1,489 new library cards. The sentiment from the public has been overwhelmingly positive. Brad reported that they will continue to fine tune the new technology in the building. The Grand Opening of the Sound+Vision Studio will be in September.

The Scone Lady Coffee Shop opened a temporary coffee bar facility on Opening Day. The more permanent coffee bar should be coming soon.

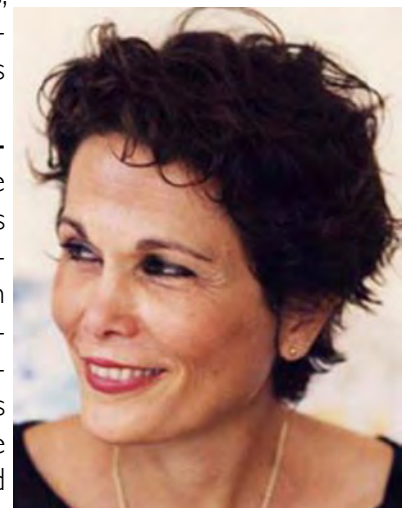
Brad had speaking engagements at the Toronto for the Canada Book Summit and in Las Vegas at the ALA (American Library Association) Annual Conference. It was a great honor and good exposure for our Library. On July 22, Brad served on a panel to help determined NEH (National Endowment for the Humanities) challenge grants.

Judy Keller suggested an acknowledgement of the volunteers, perhaps at the staff Christmas party.

Library Foundation Director's Report

Sneak Preview Result: Kathleen Morgan reported that approximately 600 people attended the June 26th Library Foundation's Sneak Peek Party to preview the new library in advance of the grand opening. The total amount earned of \$75,278 will support the Foundation's "Greatest Expectations Fund", a new endowment for programming at the new library. Kathleen thanked the planning committee, Margie Coggins, Gail Vick and Jill Fincher for leading this project.

NEH Certification Report: The Library Foundation's first certification report was filed with the National Endowment for the Humanities on July 31st. This report outlines the gifts that were raised



from January 1, 2013 through June 30, 2014 toward the Challenge Grant. The total new gifts were \$524,314.90 for year #1! This includes collected and pledged gifts from the Beach Foundation, various individuals, and net proceeds from fundraising events (Sneak Peek and Tile Project). Since June 30th, the library has received word of two more gifts totaling \$75,000, bringing the total raised to \$599,314.90, 73% of the goal.

New Gifts: Kathleen reported that the Library Foundation received two major gifts in July. Chuck and Dee Blaser have pledged \$25,000 for the teen study room on behalf of the Blaser Family Foundation. In addition, Jack and Jan Gaumnitz have pledged \$50,000 for the southwest corner reading room naming opportunity. They have chosen to name it the Horizons Reading Room. These incredibly generous gifts will support the Greatest Expectations Fund and will be matched by the Library Foundation's NEH Challenge Grant.

Ross and Marianna Beach Author Series: The first annual Ross and Marianna Beach Author Series event is scheduled for Wednesday, October 22, at Liberty Hall. The attending author will be National Book Award winner James McBride. Mr. McBride's newest book, The Good Lord Bird, won the 2013 National Book Award for Fiction. Mr. McBride will travel to Lawrence with The Good Lord Bird Band, a gospel jazz quintet. The evening will begin with a 6:00 pm reception for New Chapter Society and library board members. Doors will open to the public at 7:00 pm and the program will begin at 7:30 pm.

Grant applications submitted: US Bancorp Foundation submitted \$9,200 for book lockers. Library Friends Report

Jan Conrad announced that future book sales will be tied to the monthly Final Friday art events. The next sale will be on Friday, September 25, 5:00-9:00 p.m. and on Saturday, September 26, 10:00 a.m.- 8:00p.m..



New Business

Library Movie Screen Proposed Lending Policy In June of 2014, the Library Foundation purchased a 15' x 20' inflatable outdoor movie screen for Lawrence

Public Library. The total purchase was approximately \$4,500. Its intended use is for outdoor movies held in partnership with Downtown



Lawrence, Inc. and Lawrence Parks and Rec. To date, the screen has been used for two outdoor movies on Vermont Street. As word has spread about the existence of the movie screen, a number of local nonprofits and businesses have expressed interest in borrowing the screen. The Library Board is considering such a lending arrangement and what the appropriate rental fees will be. Renters must use Lawrence Public Library's authorized agent to operate, assemble, and disassemble the screen. Renters also must agree to all library screen usage guidelines.

Compensation Plan Implementation Brad reported that the implementation of the new salary schedule recommended by Springsted Incorporated, an independent financial advisor to the public sector, will take place on October 1, 2014. The 2% raise will bring all of the staff up to market. Elinor Tourtellot, observer

Highlights of the August LWV L-DC Board Meeting

7:13-8:56 pm, Lawrence Public Library, 707 Vermont St, meeting room B

Present: Cille King (President), Debra Duncan (President Elect), Marjorie Cole (Treasurer), Caleb Morse (Secretary). Directors: Margaret Arnold, Caroljean Brune, James Dunn, Austin Turney.

Absent: Carrie Lindsey (Vice President), Midge Grinstead, Marlene Merrill. Guests: Alan Cowles, Carol Klinknett.

Adoption of the agenda. The agenda was approved as distributed previous to the meeting.

Consent agenda. Debra (CJ) moved to approve the consent agenda as distributed previous to the meeting (including minutes from the 14 July Board meeting, Treasurer's report); motion passed unanimously.

Treasurer's report. Marjorie reported total income for July of \$1,375.00 and expenses of \$475.48. Current balances as of July 31: Checking Acct = \$4,662.57; Money Market = \$2,103.67; Stucky = \$5,628.22; Judiciary = \$381.63; Education Fund (LWVEF) = \$555.23.

Alan Cowles report on LWVK, and other things. The LWVK Board has met twice this summer, and a couple of issues have already arisen: Marty Crow and Jill Quigley were asked to resign until after the fall elections and Lori Trow was removed from the Board. LWVK contributed \$500 to a Ken Burns documentary on the Roosevelts. LWV L-DC came up with many more questions for VOTE411 than any other League. Cille added that the questions have been sent to all candidates. Dolores Furtado has asked that each chapter visit the state capitol at least once each session, but also to check in with Dolores first, so visits don't overlap. Alan reported that the Sedgwick County League has arranged for a "Voting Booth Van" to visit nursing homes on Election Day (he thinks). Austin thought this was a particularly good idea, since he thinks voting turnout is low among some senior populations. Alan has a long-standing interest in the Kansas Open Meetings Act, and has tried to get the state board to take this more seriously, largely without success. He thinks KOMA needs a legal challenge with regard to a ruling making it easier to close meetings without stating the reason.

On another front, the membership of LWV L-DC voted for study of policy about additional news sources in Douglas Co, but Alan has not found any local, state, or national policy regarding support for news sources. He thinks it's an important part of open society to have more than one news source. Carol asked if non-League members could join the study. Caleb thought, yes. There was some discussion of how to get the study going.

Cosponsorship of Candidate Events. Cille reported that the LWV Topeka-Shawnee Co is inviting only Democratic and Republican (not Libertarian) candidates to a planned debate and opened a discussion about whether we should participate, as the Board agreed to at the previous meeting. The Board recently decided in regard to Lawrence Voter Education Coalition events that it would be a violation of our non-partisan policy to participate in VEC if third party

candidates were excluded from events. After some discussion, Cille (James) moved that we only advertise LWV TSC events and not cosponsor them. There was no further discussion, and the motion carried (4-3-1).

Primary Election Summary. Cille reported that she had attended the Board of Canvassers session earlier in the day. Of 11,000+ ballots cast, there were 219 provisionals. Only one provisional ballot was cast because the voter was on the suspense list, but a number of voters refused to sign the poll book. Welcome New Board Member: Caleb (Margaret) moved to appoint Carol Klinknett to serve on the Board; the motion carried unanimously.

Land Use Committee August Meeting

The Land Use Committee met at the Merc at 7:00 p.m. on Saturday, August 23 to discuss the Planning Commission Agenda Items to be discussed on their one meeting for August on the 25th. We did not write any letters to the PC in August because there were only three items on their Agenda, all of which were non-controversial.

The first item was for a city sewer pump station known as Pump Station No. 10 Addition, for sewer lines coming from the west and north to be hooked to our current sewage treatment plant and later also to be hooked up to the new sewer treatment plant to be located along the Wakarusa to the southeast. Its proposed location is on the northwest corner of Louisiana and 31st Streets on the northern portion of this vacant lot. The property is in the floodplain. Plans for the pump station show an attractive setting that should have little negative impact on the neighborhood. Plans for the general area from the Menards property to Louisiana show the Naismith park extended along the stream to continue the trail system on to the south. **OUTCOME:** The Planning Commission gave this unanimous approval.

Item No. 2 was for the rezoning from IG (General Industrial District) to IL (Limited Industrial District) 1.88 acres of land at 720 E. 9th Street. This is located at the very eastern end of East 9th Street in the Warehouse Arts District on the northeast corner of 9th and Delaware. This general area is in a multi-use area that has encouraged the redevelopment of





an essentially underused and abandoned industrial area into a vibrant and thriving arts and multiple use (light industrial, commercial and residential) area. Only two restrictions have been placed on the uses for the area: no Payday advance or other short term loan businesses, and

no car title loan businesses that leverage title to owners' cars for short term loans are permitted. The rezoning has been supported by the East Lawrence Neighborhood Association. **OUTCOME:** Approved unanimously.

The third item was a variance request for two adjoining lots in one of the early platted county subdivisions. A garage was unintentionally built over a lot line and required adjusting lot lines of the lots. When this was done with the desired configuration, one of the lots was too small to conform to the regulations; hence the required variance. The regular procedure for simple plat approval, such as this would normally have been, requires only Administration review; however, a variance requires Planning Commission approval. **OUTCOME:** Approved unanimously.

Fracking Glossary

Acre Foot – a measurement of an amount of water covering one acre to a depth of one foot. One acre foot equals 325,857 gallons. One acre foot will provide a family of up to 5 people for one year with water. A typical hydrofracture of 5 million gallons of water equals 15.3 acre feet.

Annulus – the space contained between the center well bore and any external tubing. Sometimes used for separated gas flow.

Appropriation right -- under article 7 of chapter 82a of the Kansas Statutes Annotated and amendments thereto, to divert from a definite water supply a specific quantity of water at a specific rate of diversion,

Aquifer – An aquifer is a formation, group of formations, or part of a formation that contains sufficient saturated permeable material to yield significant quan-

ties of water to wells and springs.

Blowout – the uncontrolled release of crude oil and/or natural gas from an oil or gas well after pressure control systems have failed.

Borehole -- generalized term for any narrow shaft bored in the ground, either vertically or horizontally.

Casing – large diameter pipe that is assembled and inserted into a recently drilled section of a borehole and typically held into place with cement. There may be additional casings within a larger casing each separated by cement. The casing and cement is to remove contact with the oil or gas from the surrounding soil, water, or rock into which the well is dug.

Flowback – the water-based solution that flows back to the surface during and after the completion of hydraulic fracturing, consisting of the fracking fluid used to fracture the rock. The fluid contains clays, chemical additives, dissolved metal ions and total dissolved solids.

Formation – a specific body of rock of a certain lithological type and age.

Formation water – water that occurs naturally within the pores of rock.



Hydraulic fracturing – Also referred to as hydrofracking, hydrofracturing, and fracking, is a well development process that involves injecting water under high pressure into a bedrock formation via the well. This is intended to increase the size and extent of existing bedrock fractures. Fracking involves high-pressure injections of water, chemicals and sand into rock formations, which opens cracks that enable trapped gas/oil to flow.

Injection wells – deep wells which allow for the placement of fluids below the ground. The Kansas Corporation Commission (Commission) regulates Class II injection wells which are used to inject fluids associated with oil and gas production into the

ground. There are 2 types in use in KS: disposal wells and secondary/enhanced oil recovery wells. Disposal wells are used to inject waste fluids into rock formations that do not produce oil or gas, 2-3,000 feet below the ground. The formations are isolated from usable quality groundwater and are sealed above and below by unbroken and impermeable rock formations. There are about 5,000 disposal wells in Kansas.

Groundwater – water that is located below the surface in pockets, aquifers, underground rivers, etc.

Induced fractures – fractures in subsurface rock strata caused by stress from the drilling equipment or other pressures during the drilling process.

Induced seismicity – earthquakes resulting from human activity that causes a rate of energy release, or seismicity, which would be expected beyond the normal level of historical seismic activity.

Injection Wells – a vertical pipe in the ground into which water, other liquids, or gases are pumped or allowed to flow. Deep wells are used worldwide to dump contaminants, often suspended in water, so that they are more or less permanently sequestered below the aquifer. Injection wells are used by many industries.

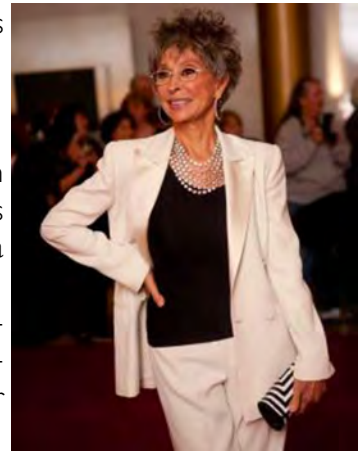
Produced Water — water that is produced along with oil and gas extraction; also referred to as “brine,” “saltwater,” or “formation water.” It is naturally occurring water found in rock formations that flows to the surface throughout the entire lifespan of the well. Produced water has chemical characteristics of the formation and associated hydrocarbons from which it was produced. May contain minerals including barium, calcium, iron and magnesium, dissolved hydrocarbons such as methane, ethane and propane along with naturally occurring radioactive materials (NORM).



Proppant – a chemical or very small particle like sand which will hold a fractured

l shale open for oil or gas to migrate to the well.

Proprietary – information or a product that is owned exclusively by a single company that carefully guards knowledge about the technology or the product’s inner workings or makeup.



Surface water – water on the surface of the planet in a stream, river, lake, wetland or ocean, in contrast to groundwater or atmospheric water.

Water rights – by Kansas statute, any vested right or appropriation right under which a person may lawfully divert and use water. It is a real property right appurtenant to and severable from the land on or in connection with which the water is used and such water right passes as an appurtenance with a conveyance of the land by deed, lease, mortgage, will, or other disposal, or by inheritance. (see Appropriation right)

Well Pad – the area that has been cleared for a drilling rig to work on a plot of land designated for natural gas or oil extraction.

WELCOME!

New (Returning) Member

Please welcome Ginger Heere, who was a member in 2001 and is now returning to us. She is interested in helping prepare for meetings, providing hospitality, registering voters, and helping with voter education. We look forward to seeing her frequently.

Just for Fun - Identify these Famous Hispanic Americans!

The people pictured in this issue are all Hispanic Americans known for a wide variety of contributions. See how many you can name, and give yourself bonus points for knowing their professions. Answers will be in next month’s VOTER.



LEAGUE OF WOMEN VOTERS®
OF LAWRENCE / DOUGLAS COUNTY

Make a Difference – Join/Support the League!

Complete form, enclose check made out to LWV L/DC, and mail to the address listed below.

*(Membership is open to anyone who will be eligible to vote in the next November election.
New or renewed memberships received now will expire March 31, 2015)*

Date _____ Renewing member

_____ New Member. I heard about the League via (Facebook, Web Site, Friend, Other): _____

Suggested voluntary membership assessment:*

Approximate Household Income	Individual membership	Household membership
Student**	_____ \$17	_____ \$29
Under \$25,000	_____ \$20	_____ \$35
\$25,000 to \$50,000	_____ \$35	_____ \$55
Over \$50,000	_____ \$55	_____ \$85
Sustaining member	_____ \$100	_____ \$150
Life member (of 50 years)	_____ \$0	

* Our membership assessment supports the National and State Leagues at \$49/member (\$31 National and \$18 State).

** High school or postsecondary student enrolled at least part time in an accredited institution.

_____ I am not a member, but would like to support the League with my contribution as indicated below.

I have enclosed a contribution of \$ _____ for the League General Fund.

I have enclosed a contribution of \$ _____ for the League Education Fund***

*** This contribution is tax-deductible. Write check to "LWV Education Fund."

PLEASE PRINT

Name(s) _____

Address _____

Telephone _____ Email _____

As a League member or supporter, I would like to help support League activities by participating as follows:

General Membership Meetings:

- ___ Set up and/or tear down
- ___ Hospitality (provide coffee/tea/dessert)
- ___ Taking notes/writing up report of meeting

Membership:

- ___ Recruitment
- ___ Mentor/follow-up with new members
- ___ Provide a ride to a fellow member
- ___ Phone members without internet access about special updates

Voter Services:

- ___ Register voters
- ___ Help with voter education

Promotion of League to our Community:

- ___ Public speaking
- ___ Represent League at community events
- ___ Observer corps (attend/report on government meetings)
- ___ Help with research for League studies on issues
- ___ Serve on the Board of Directors

I have the following skills:

- ___ Editing articles/reports
- ___ Database management
- ___ Microsoft Word / Excel / Quickbooks
- ___ Website/Social Media design/management

My interests include:

PO BOX 1072 • LAWRENCE KS 66044-1072

President@lawrenceleague.com • www.lawrenceleague.com
www.facebook.com/lwvldc • www.twitter.com/lwvldc