

April 2014

Calendar	1
Co-President's Message.....	1
Annual Meeting and Auction	2
Auction Items	3
Brown Bag Lunch	3
From Your Treasurer	3
Helen Fluker Award	4
Pedestrian Coalition Meeting	4
Voter Education Coalition	4
League Members Speak Out	5
LWVK Council Meeting	5
Minutes of the March Board Meeting	6
Land Use Committee	7
Welcome New Members!	8
Just for Fun - Name the Poets	8
Membership Form	9



League of Women Voters
P.O. Box 1072
Lawrence, KS 66044-1072



The VOTER

Bulletin of the LWV of Lawrence-Douglas County, KS

The League of Women Voters is a non-partisan political organization encouraging the informed and active participation of citizens in government and influencing public policy through education and advocacy.

Co-Presidents:	David Burress & Cille King	president@lawrenceleague.com	
Membership:	Margaret Arnold	membership@lawrenceleague.com	
Voter Editor:	Ruth Lichtwardt	lightwatcher@gmail.com	
Local League:	www.lawrenceleague.com	www.facebook.com/lwvldc	www.twitter.com/lwvldc
State League:	www.lwvk.org	lwv.kansas@gmail.com	785-234-5152
National League:	www.lwv.org		202-429-1965

League Calendar

Saturday, April 19th	11:30 am	Annual Meeting. <i>Smith Center at Brandon Woods, 4730 Brandon Woods Terrace.</i> Please see article on page 3.
Saturday, April 19th	7 - 9 pm	Land Use Committee Meeting. <i>Community Mercantile Meeting Room, 901 Iowa St.</i>
Thursday, April 24th	8:00 am	Voter Education Coalition Meeting. <i>Chamber of Commerce Meeting Room, 646 Vermont Street, Suite 200.</i>
Saturday, April 26th		LWVK State Council Meeting. <i>Wichita.</i> Please see www.lwvk.org for details.
Thursday, May 8th	7 - 9 pm	LWVL-DC Board Meeting. <i>Location TBA, please check www.lawrenceleague.com.</i> All League members are invited to attend.
Friday, May 10th	9:00 pm	VOTER Submission Deadline. Please send submissions to lightwatcher@gmail.com
Thursday, May 15th	11:30 am	Brown Bag Lunch with Midge Grimstead, Kansas State Director, Humane Society <i>Watkins Community Museum, 1047 Massachusetts.</i> Please see article on Page 3.

Co-Presidents Message:

Looking Back and Looking Ahead

We live in dark times, and Kansas is an epicenter of darkness.

Or so it seems to me. Yet my life and many lives around me go on as before. This is the darkness at the edge of the storm, its full fury as yet unknown.

I must apologize for all this melodrama. As I began to look back over my past year as Co-president, I felt forced to compare what we in League have been doing with all the immediate challenges we face. Those challenges are stark. They are of two kinds: catastrophic short-sightedness in the substance of public policy, and rank injustice in the procedural systems that bring public policy about.

These public policy challenges matter because--if you will forgive what I believe to be an entirely justified melodrama--the future of our civilization is at stake. As documented in Jared Diamond's book *Collapse: How Societies Choose to Fail or Succeed*, many civilizations have fallen because they destroyed the ecology they depended on. According to an article in the latest *Scientific American*, we have a window of approximately 20 years to reverse the greenhouse gas pollution that threatens to destroy our own ecology by means of radical climate change. There seems to be little political willingness to take action. Moreover, quite independently of climate change, human beings have apparently launched a mass extinction of species that, when amplified by climate change, could prove comparable to the Cretaceous-Paleogene extinction--which was the greatest of all mass extinctions. Kansas is a microcosm of ecologically perverse policy-making, with a leadership bent on supporting carbon energy, opposing wind and solar energy, and resisting the Endangered Species Act.



It might seem anticlimactic (so to speak) to also bemoan Kansas public policies that withhold education and health care and unemployment benefits and economic stimulus in a slumping economy, but in fact the issues are interrelated. Insensitivity to the environment and its impact on ordinary people is just one aspect of a broader insensitivity to ordinary people in all its manifestations. Moreover, when the people are preoccupied with problems of immediate survival, it is hard to focus their attention on larger matters.

These policy disasters are not independent of the flaws in our procedural democracy. On the contrary, many of those disasters are caused by big money interference in politics. For example, the owners of an immensely large carbon fuel company headquartered in Kansas (also noted for many violations of environmental law) have been leaders in subsidizing a synthetic propaganda program of climate change denial. They have also been active in organizing radical right movements that oppose essentially all activities of government other than those based on violence (police, military, prisons). These movements in turn have taken many illegitimate steps to disenfranchise ordinary citizens and override their opinions in other ways.

National, state, and local Leagues stand four-square against all these trends. We are only a tiny group of around .03% of American citizens, but working with other groups we can make a hugely disproportionate difference.

Looking back on my year in this light, I see some things I wish I had done differently. I wish I had thought more about how to focus the local League more clearly on relating to the really big picture. Partly I think we in the League have under-prioritized climate change and ecological destruction, but perhaps more importantly we have failed to consistently connect the dots between the many small issues we address and the larger issues of social survival--and also the issue of having the kind of resilient and mutually supportive society we must have in order to address these larger issues.

I also see some things I think we got about right. The League has always given a somewhat higher priority to matters of procedural democracy than matter of substantive policy. We believe that if the procedures are fair and if groups like the League do a good job of making reliable information available, then more often than not good public policies will result. This year Leagues at all levels have focused on resisting radical-right attacks on the right to vote. We have continued to work on voter registration, a process made exceedingly difficult by new impediments to registering voters. Our local League has also taken an active interest in the open meetings law, an issue of great importance for voters who want to know what their elected and appointed officials are doing with public resources. We have also worked for legislation to prevent drone spying without a warrant, a matter that may soon be of serious concerns to political activists supporting unpopular causes.

Other ongoing League work might seem unrelated to the big picture, but actually does have a connection. The efforts of the Pedestrian Coalition to create a more livable Lawrence environment reflect our sensitivity to the environment, to the lives of ordinary people, and to the responsiveness of local government. The annual Fluker Award represents our effort to encourage those who seek to unclog the channels of representative democracy. The Stucky scholarship represents our effort to encourage the next generation of active and participating citizens. The brown bag luncheon series is our effort to create a Douglas County citizenry well informed on the issues. I feel sure that in the upcoming election year our League will once again help keep Douglas County citizens well-informed on the candidates as well, either through cooperation with forums sponsored by the Lawrence Voter Education Coalition or on our own.

This year I will continue to work with the League, though not as a board member. I have a particular interest in helping the local League develop new policy on economic development. In the view of many researchers, economic development efforts are often in danger of being run as unaccountable and ineffective transfer payments to land developers from the taxpayers. If that is the case, then local government economic development efforts could have the perverse effect of reducing the capacity of government to deal with real problems. I think we need a League study to sort this out in the case of Lawrence and Douglas County.

- David Burress



Annual Meeting - and Auction!

All members and guests are invited to join us for our Annual Meeting of the League of Women Voters of Lawrence – Douglas County, Saturday, 19 April, 2014 at 11:30 am at the Smith Center, 4730 Brandon Woods Terr., Lawrence. A silent auction will be held during all proceedings. State Senator (and LWV L-DC member) Marci Francisco will speak on

“Recent legislation, is it fair?” examining this years' controversial legislation.

If you have a donation of a silent auction item for the annual meeting, please contact Midge Grinstead at 766-3871 or mgrinstead@humanesociety.org

Auction Items

Harry is a KU Fan Wall Hanging

Value \$300

Created by Georgann Eglinski

Blue Dog originally designed/painted by George Rodrigue

KU Glow Block

Value \$39

Community Mercantile Gift Certificate

Value \$25

Checkers Gift Certificate

Value \$20

Dusty Bookshelf Gift Certificate

Value \$20

Panera Bread Gift Certificate

Value \$15

Raven Gift Certificate & Ks Travel Book

Value \$40

Autographed Baseball

Value \$250

Signed by Dottie Kamenshek – catcher for the Rockford Peaches and subject of the movie “A League of Their Own”

Romance Pack - Movies

Jewel of the Nile, Romancing the Stone & candy/popcorn, Value \$30

Doris Day/Rock Hudson Movies

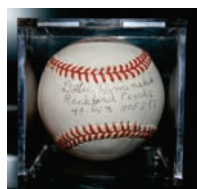
Lover Come Back, Pillow Talk & Popcorn Value \$30

John Wayne Movies

North to Alaska, The Quiet Man & Popcorn Value \$40

South Pacific, Bye, Bye Birdie Musicals & candy

Value \$30



May 15th Brown Bag Lunch

Please mark your calendars for an interesting and informative May 15th Brown Bag: same time and place. Our board member Midge Grinstead, Kansas State Director of the Human Society of the U.S., will present “Be a Citizen Lobbyist.” Her experience advocating for animal rights in the legislature and at home brings her in contact with other organizations. She says she is frequently asked to advise others

how the League might help them. Midge writes, “I will speak about how to approach your legislator; how to feel comfortable taking about your issue, follow up and gather support.” Her presentation includes a power point. Many of us will gain ideas from this program. Even experienced advocates should be able to share ideas about League opportunities which extend beyond the ballot box. Midge’s work with the Humane Society aims to protect all animals and confront all forms of cruelty through action and advocacy. We look forward to learning how

to apply the same standards to people.

From Your Treasurer

Once again, thank you! Many of you have mailed in your dues for the 2014-15 League Year (April 1, 2014 to March 31, 2015) and we appreciate you!

We are testing a new dues structure designed to make League membership accessible to more members. For details see the form in this Voter. Our Annual Meeting is April 19, 2014, and we will be voting on the change in dues. Only dues-paid members will be eligible to vote.

How do you know if you owe dues? The League fiscal year runs from April 1, 2014, to March 31, 2015. If you last paid before October 2013, it’s time to pay them now. If you don’t remember, call or email 842-6085, lwwldc@gmail.com to find out.

How much are dues? The board-proposed new dues policy is in effect until a vote at the Annual Meeting determines its permanent adoption. See the form in this Voter for details.

How do you pay? You may mail your check with the completed form to LWW at PO Box 1072, Lawrence, KS 66044, or bring them with you to the Annual Meeting, April 19. Please enclose the completed form.

What if you didn’t pay dues last year? If you were officially “inactive” last year, dues you pay now will return you to the active list for the 2014-2015 year.

Helen Fluker Government Award

The fifteenth annual Helen Fluker Open and Accessible Government Award luncheon was held on March 22, 2014 at the Smith Center at Brandon Woods. Laura D. Routh, who has been a leader in promoting citizen participation in government in multiple endeavors was our newest winner of the award. Laura is an advocate for establishing a Citizens Review board for the Lawrence Police. She was appointed as recording secretary of the local Sustainability Advisory board. Her proposal for greening tax abatements was basis for SAB policy, and she advocated for volume-based trash rates. She has served as Chair for the Lawrence Association of Neighborhoods, and is a founding member of MadreLawrence. She is currently Chair of the Lawrence Pedestrian Coalition.

Laura was not able to attend the luncheon, as she had a non-refundable trip scheduled months earlier. Leslie Soden and Mary Davidson had both nominated Laura. We celebrated in honor of Helen Fluker and in the absence of Laura. Helen's husband, one son, two granddaughters, a cousin and his wife were present and among 39 who enjoyed the event. Laura Routh was presented with the engraved silver salver when she returned to Lawrence and was photographed in front of the Pollinators mural, which Laura has promoted saving from scheduled new construction.

- Cille King

Pedestrian Coalition Meeting

The Pedestrian Coalition met on Wed. 9 April in the lower level meeting room at the Carnegie Building. Commissioner Bob Schumm joined the meeting and explained the City's processes and articulated ideas and priorities.

Funding strategies were discussed and the 3 preferred strategies were sidewalk utility fee; property tax and sales tax. We are waiting for the recent sidewalk inventory for scope and costs for repair, replacement, or initial construction where none exists.

Robert Lewis will investigate Manhattan's sidewalk program, and Chris, Marian and Laura will meet with the City Auditor on Monday, April 21st, at a time to be announced.

Future meetings will have invited guests, to include a rep from KU, Mayor Amyx, Police Chief Khatib, and the Chair of the Transportation Safety Advisory Board.



A document was passed out giving additional information on past City survey results, and lessons learned in other cities.

A copy of the Horizon 2020 survey, including questions about pedestrian issues was attached to the online minutes. Laura asks us to review and consider using these concepts to frame any comments made to City leaders or at upcoming public meetings.

The group reconfirmed our commitment to:

1. The status quo is not working. We want change.
2. We will advocate for a City decision regarding fundamental responsibility for sidewalk infill, repair and maintenance.
3. We will advocate for a comprehensive pedestrian plan (including design issues) and mechanisms for implementation and benchmarking of the Complete Streets Plan that the City already adopted.
4. We will advocate for adequate funding for completion and maintenance of the pedestrian network, and requesting equity between City spending on streets and spending on pedestrian infrastructure.

To that end, LPC members committed to attending the upcoming City Budget listening sessions and pending Horizon 2020 public meetings. Dates and times to be announced. We will let our decision-makers know that we want pedestrian infrastructure, access and safety to be a priority.

- Submitted by Cille King from Laura Routh's minutes

Voter Education Coalition

Voter Education Coalition met on Thu. 3 April 2014 in the Lawrence Chamber of Commerce Meeting Room. Attending: CJ Brune, Ann Gardner, Cille King, James Dunn, Scott Criqui, Julie Hack, Hugh Carter, Carol Klinknett.

Patrick Wilbur and Scott have volunteered to co-chair the VEC. Ann and CJ are concerned that Patrick can maintain a non-partisan presence since he is seen as the face of the Libertarian Party in this area. Hugh said you are limiting the group by doing this – these are the type of people that step up. James said that the precedent in the VEC was that people would remove themselves from key duties if they are officially involved with a campaign. Scott mentioned that he is a Democrat and it could be advantageous for this to be the face of the coalition (Democrats and Libertarians). **UPDATE: Scott and Patrick will be attending a LAN meeting in the near future.**





Julie asked Patrick if he could be non-partisan as a co-chair of the VEC. He said yes and requested that the group inform him if he ever crossed the line. **Julie proposed that Scott and Patrick serve as co-chairs and this was approved by voice vote. UPDATE:** Patrick

will be resigning his position as Vice Chair of the Douglas County Libertarians.

Turnout for this meeting is disappointing. LAN is a key group and CJ is representing them. Bert Nash said they will be sending a representative. Leadership Lawrence will be contacted. The group would like the VEC to have broad-based representation. Ann said that she will continue to be a resource for the VEC and she and Julie have the documentation from past initiatives. Ann mentioned that it was very helpful to send forum rules in advance to the candidate and their team.

Channel 6 – would help to have them in the loop, but hard to schedule an ideal time with them. Using the commission chambers was very convenient because of the new AV system. City also supplied staff, but not sure if they would do that for partisan races. Hugh will be the ambassador to Channel 6 to bring them in the loop. **Hugh will contact Channel 6.**

We should also bring Kansas Public Radio in the loop for the fall elections. **Patrick will contact KPR. Scott will meet with Patrick to determine next steps. UPDATE: Scott and Patrick will be meeting on 4/9.**

Hugh said the Government Community Affairs committee meets Wed, 4/9. **Hugh will send an invite to Scott and Patrick. UPDATE: Scott and Patrick will be attending the meeting on 4/9.**

2nd U.S. House district race – Cille was thinking of working with Topeka League to cover this race. Scott and Patrick will talk about this.

League Members Speak Out

Opinions from League members this month include: Forrest and Donna Swall, Letter to the Editor: Suppressed Vote (appeared March 29; and Dolores Furtao, president of the League of Women Voters of Kansas: Due Process (appeared April 8, 2014). Responses online to the second letter included several from Cille King, co-president of the League of Women Voters-Lawrence/Douglas County.

Registering High School Students

Bishop Seabury High School has scheduled their government class of seniors to meet with us on Tuesday, 22 April in order to register to vote. We will be giving an interactive lesson on voting history to stress the importance (to them) in registering and voting. We are excited to have this chance to encourage citizen participation with these young people.

We have a tentative schedule on Wed. 23 April, with Free State High School to work with the student council in beginning to register students at FSHS. We are still trying to meet with Lawrence High, Eudora High, Baldwin High and Haskell Indiana Nation University in registering their students. Young people are under represented at the polls and the League is working to change their low numbers and help develop a life time of voting. - Cille King

LWV Kansas Council Meeting

The LWVK Council Meeting will be held on Sat. 26 April at the Tallgrass County Club (2400 N Tallgrass St) in Wichita with rooms available at Tall Grass Inn for \$90/night. Local leagues are allowed 3 voting members, but all members are welcome. Cost is \$60. LWVL-DC will pay for the 3 voting members from Lawrence/Douglas County. Call Cille King (785-766-6992) or email: cilleking(at)gmail.com by Sat. 19 April to make reservations.



Tentative agenda, "Voting is Victory":

9:00 Registration & Continental Breakfast

9:30 Welcome by Wichita League, City official, LWVK President

10:00 Business SessionI: Official organization of Council, 2014

10:30 Keynote Speaker,

11:15 Protect the Vote Update, LWVK President reports

11:45 Lunch, Networking: WSU President greets & speaks

12:30 Local League Roll Call, 3 min. opportunity for each local league to brag about the year's accomplishments

1:00 Business SessionI: Committee Reports
Treasurer, budget, Endowment, Nomination

2:15 Update from LWVUS-Education

2:30-Break

2:45 Business SessionIII: Action Items, reports, direction to the Board

4:00-5:00 Continuing Small Group Discussions

Communications, MLD, Fracking work group, President's Sharing Session

Minutes of the March 2014 Board Meeting LWVL-DC

Present: David Burress (Co-President), Cille King (Co-President and President Elect), Marci Francisco (Vice President), Marjorie Cole (Treasurer), Caleb Morse (Secretary). **Directors:** Margaret Arnold, Caroljean Brune, James Dunn, Midge Grinstead, Marlene Merrill. **Absent:** none. **Guests:** Alan Cowles.

Adoption of the agenda. The agenda modified to include discussion of problems encountered by the Nominating Committee; the chair of the local study committee on hydraulic fracturing; a request for nominees to the LWVK Board of Directors; and Margaret's MLD report. The agenda was adopted as modified by unanimous consent as distributed previous to the meeting.

Consent agenda. The consent agenda (including minutes from the Feb 13 Board meeting as amended with corrections from Marjorie, Treasurer's report and dashboard) was adopted by unanimous consent. [Other items distributed with the agenda: letter to the Lawrence Memorial Hospital Board on KOMA; handbill from Kansas Medicaid Access Coalition announcing Medicaid expansion event March 18; proposed amendments to LWV L-DC Bylaws articles IV and IX; memo from LWVK President Dolores Furtado on nomination of League members for State Board.]

Drone issue. Prior to action on the agenda, Marci gave us a brief update on a bill introduced about drones. Marci has been appointed to subcommittee Natural Resources Committee to look into this issue.

Treasurer's report. Marjorie reported that total income for Feb 2014 was \$165 (all in dues). Expenses were \$131.24 (\$18.40 for postage, \$43.54 for printing the Voter, \$69.30 for administration). Net inflow was \$33.76. Current balances as of Mar 1: Checking Acct = \$512.06 (with \$43.54 outstanding, real balance is \$468.52); Money Market Acct = \$2,101.35; Stucky Acct = \$6371.72; Judiciary Acct = \$593.58; Education Fund (LWVEF) = \$1,732.55. Comments: A fund-raising letter was mailed Dec 7, 2013. January donations brought the total received up to \$2,220. Of that \$1,130 has gone into the General Fund and \$1,090 has gone into the Education Fund. The Dues Scholarship fund (a subset of the General Fund) currently has \$100 available. No scholarships were given in February.

Calendar. Items discussed included: Brown Bag Lunches on Mar 20 and Apr 17; a PTO-sponsored program at New York School on Mar 25, at which LWV L-DC could set up a table; and items for the Mar issue of the the Voter.

Ruth Lichtwardt will edit the Mar and Apr issues of the Voter. Cille informed us that not many people had attended the previous VEC meeting on Mar 13, but that co-chairs Bateman and Gardner don't want to do it anymore. If VEC will continue through fall election, it may be only for County Commission elections. She added that the chairs are willing to include all candidates for county elections, as League requested during the last election cycle. Margaret suggested writing up an article soliciting volunteer. Cille opined that the LWV L-DC and Topeka-SC should go in together on a debate for US 2nd distr. Marlene asked, if the VEC falls apart, does that mean League will have to handle it? Cille replied, the short answer is yes, or—at least—we have in the past. There followed a short digression on the party-switching bill making its way through the Legislature. And, in other coalition news, CJ informed us that 5 League members had attended a meeting of the Pedestrian Coalition the night before.

Introduction of, and brief comments from, any other visitors (open meetings report).

Alan reported that he continues to look into Kansas Open Meetings Act (KOMA) violations. From time to time, local boards/commissions violate KOMA by closing meetings to discuss unnamed privileged matters. KOMA states that discussion of the transaction of public business should be open to public and requires, on closing meetings, that boards must state the subject to be discussed (not merely "privileged matters". A ruling in a Salina case states what can be discussed, but Alan thinks the case was argued poorly and poorly decided. Alan thinks part of the problem lies in the definition of "subject" as applied in the KOMA requirement that the "subject should be stated"? He suspects that it is something that would have to be raised in court and perhaps that a court ruling on a test case would show that KOMA should be rewritten. At any rate, Alan has sent a report on abuses to the Douglas Co District Attorney's office, which passed it along to Kansas Attorney General's office, but the AG hasn't gotten back with a reading. Marci suggested she might inquire on the progress, and David suggested she contact Patrick Hurley in the DA's office. She will do so during the April legislative break. Alan reported that City Commissioner Mike Amyx has been very sensitive about KOMA. Amyx inquired with Alan Belott of the Hospital Board, who says subject of closed meetings are of such a sensitive nature that the Hospi-





tal Board just can't follow KOMA, and City Manager David Corliss, who says even describing the nature of the need to close a meeting would result in a defamation lawsuit. This seems unlikely to Alan, who followed up with a letter inquiring about details. Corliss did not respond. Marci asked if Alan had filed a formal complaint with AG's office. Alan responded that he was quite sure that he filed a formal complaint with DA and that this is the way that the DA handled the issue. Marcie noted that, were this the case, then the AG should come and investigate. David asked what LWW L-DC can do to push clarification of KOMA along. CJ thought it would be best to follow Marci's suggestion: follow up with AG, wait for a ruling, then pursue the issue from there. David suggested League should contact DA, just to make sure he views Alan's complaint as a complaint, and to make sure said complaint has been filed with AG by DA's understanding; and that Marci should also contact the DA in capacity as a legislator. At this point, there is no reason to go back to the Hospital Board about this issue.

Supporting Medicaid expansion. Cille offered to drive if other League members wanted to travel to Topeka to lobby legislators for Medicaid expansion at an event to be held in the Capital on Mar 18. CJ thought it to be a kind of pointless activity, since our legislators already support expansion. Marci thought it would be nice to leave a note voicing support and thanks. And Sandy Praeger was to speak at the event.

Bylaws amendments for consideration by annual membership meeting. Prior to the meeting, David had circulated proposals to amend articles IV and IX of our Bylaws. Cille (Margaret) to recommend the proposed revisions for adoption at Annual Meeting. In discussion, some amendments were suggested and accepted as friendly amendments. The modified proposal was adopted by consensus.

Nominees to LWWK Board? David solicited nominees to serve on the LWWK Board of Directors. James noted that he would prefer not to continue in this capacity. Margaret suggested Marjorie; Marjorie demurred. Cille asked Alan if he would serve, describing the commitment of 5 meetings a year in Topeka with the portfolio of the representative of LWW L-DC. Alan said he'd consider it. LWWK also needs a nominee to serve as Treasurer.

Fracking study. Marlene had thought she might have to resign from this position, due to scheduling conflicts, but, having considered it more fully, decided she could serve as

the local study chair, and plans to organize an informational meeting and a consensus meeting later this year.

Nominating Committee report. Sharon Brown reported in absentia that the Committee still had not been able to identify nominees for Co-President, President-Elect, or Vice President, although a couple of members were considering the latter two positions. The Committee had found nominees for six members of the Board of Directors, but is now out of ideas. Marjorie was thinking about looking up inactive members.

Voter registration report. Cille noted that there was really nothing new to report. CJ said she went to Washington Days, an event sponsored by the Kansas Democratic party, where there was lots of talk about registering voters using only the Federal form.

Fluker Committee. CJ reported that the group of 6 committee members had worked hard to choose a good recipient and arrange the luncheon. They received three serious nominations and one joke nomination (which, in the opinion of this writer, was not a joke nomination). Cille, a committee member, and Leslie Soden (who nominated the recipient) will speak at the award ceremony.

Annual membership meeting. David reported that there was no pressing business here, since we have decided on a speaker and a menu. Midge and Marci offered to donate items for a silent auction.

Marci (Marlene) moved to extend the meeting for 8 min to allow for an update on fund raising activities.

Spring fund raising event. Midge reported that the fun run group picked a children's organization. She is still working on another event, but has had little time recently.

Putting information on website on how legislators voted on League issues. Cille suggested picking a dozen or so bills we have obvious policy on. Marci noted that Senate Minority Leader Anthony Hensley's office has an intern working on this already and that League might be able to take advantage of the data she/he compiles.

Further comments from visitors. Alan commended the Fluker Award Committee for their excellent choice of recipient.

Adjournment. The meeting adjourned at 9:12 pm.

Land Use Committee March Meeting

The Land Use Committee (LUC) met at the Merc on March 22 at 7:00 p.m. to discuss current issues on the Planning Commission (PC) Agenda to be discussed at the PC meeting of March 24. There were only four items on their Agenda: two regular public hearing items and two mis-



cellaneous items. There was one controversial issue but we decided not to send a letter on it, Item No. 2, which is explained below. Cille King attended the PC meeting representing the League.

The first item on the Agenda, **Item No. 1**, was for a Special Use Permit for a pump station: 547 Maple Street in North Lawrence. The proposed Site Plan appeared to protect the surrounding neighborhood by the landscaping and the enclosure for the equipment. The purpose of the project is to pump out stormwater, a needed improvement in that area. **OUTCOME:**The PC voted approval.

Item No. 2, revision of K-10 & Farmer's Turnpike Plan in the I700 section of E.902 road, was the questionable one for us. The request deals with tracts totaling about 160 acres located mostly west of the western section lines of Sections 20 and 29 of the Northwest Plan and a smaller portion in the southwest portion of Section 20 in the Northwest Plan immediately north of Rock Chalk Park. The developer is not requesting rezoning at this stage, but rather, Area Plan changes. Changing this plan as requested by the developer would allow him to get the required rezoning to develop a 25-acre site located immediately west of Sections 20 and 29 in a wedge shaped parcel east of the curve of Highway 10 as it goes north to meet the Turnpike. He is asking for a designation that will allow him to get Limited Industrial Zoning to allow a mini-storage development. This particular location is highly visible from Highway 10. Because this is a Gateway area to Lawrence, and requires very special consideration of the type of uses and appearance permitted, our preference would be not to develop that type of use in that area. Also, this would be an important location for an office business park for uses such as office-research. Therefore, generally we would have written a letter on this to the PC. However, what the staff was recommending for this use—approval—and what they recommended in their Staff Report as their proposed revision to the Area Plan map (the K-10 and North of Farmers Turnpike Plan) was confusing. Therefore, we decided not to write to the PC on this item. Cille King reported that the PC was divided on this issue. **OUTCOME:** The PC postponed the item indefinitely to allow the developer to present a site plan that would allow the PC to more clearly evaluate the proposed use.

Misc No. 1; variance for Certificate of Survey; 1433 and 1445 N. 300 Rd/Hwy. 56. This is a request for a variance for county property fronting on a highway to allow for a Certificate of Survey division of one lot into two without having to dedicate the required right-of-way. The required KDOT approvals have been received with the provision that no additional divisions will occur. **OUTCOME:** Approval.

Misc Item No. 2: Certificate of Survey Variance for Property at, and adjacent to, 1619 E 1818 Road. This Certificate of Survey is a Cluster Development that will divide approximately 26 acres to create four Residential Development Parcels with approximately 3 acres each with 10 acres set aside for future development. Again, this lacked needed right-of-way but also received KDOT permission. **OUTCOME:** Approval.

We also discussed two other issues: (1) the questionnaire that the consulting firm the City has hired to get public opinion on the upgrading of Horizon 2020, and (2) the difficulty in locating planning materials on the City website. This second issue was reported to the Staff and they plan to correct it.



Welcome New Members ! - And a Reminder for All

Please welcome the four new members who have joined us since the last Voter was published. Anne Fluker is interested in learning more about League positions, observing government in action, and participating in voter service activities. Debra Duncan's varied interests include membership activities from phoning people to mentoring others. She also listed registration and voter education on her membership form. Janice Friedman has also indicated her willingness to help with registration, voter education, public speaking, representing the League, and serving as an Observer. Dennis (Boog) Highberger did not list specific interests, but his experience in city government will, we hope, allow some future volunteering.

This title includes a "Reminder to All" because so many long-time members return their membership forms leaving the "skills and interests" area blank. We really need to include more people in planning and executing League activities. Some are happy to speak or use computer skills, but we have a lot of small tasks like phoning people who lack email, providing rides, setting up a few chairs, or even bringing cookies once in a while. We can strengthen our membership by adding details. We need the membership to be more active, and perhaps asking more of them to do small jobs that they like to do would help. Please feel free to add information, sending it to Marjorie Cole or Margaret Arnold.
— Margaret Arnold

Just for Fun - Name the Poets!

In honor of National Poetry Month, this issue includes pictures of 12 reknowned poets. How many can you name? Answers in next month's VOTER.



LEAGUE OF WOMEN VOTERS®
OF LAWRENCE / DOUGLAS COUNTY

Make a Difference – Join/Support the League!

Complete form, enclose check made out to LWV L/DC, and mail to the address listed below.

*(Membership is open to anyone who will be eligible to vote in the next November election.
New or renewed memberships received now will expire March 31, 2015)*

Date _____ Renewing member
_____ New Member. I heard about the League via (Facebook, Web Site, Friend, Other): _____

Suggested voluntary membership assessment:*

Approximate Household Income	Individual membership	Household membership
Student**	_____ \$17	_____ \$29
Under \$25,000	_____ \$20	_____ \$35
\$25,000 to \$50,000	_____ \$35	_____ \$55
Over \$50,000	_____ \$55	_____ \$85
Sustaining member	_____ \$100	_____ \$150
Life member (of 50 years)	_____ \$0	

* Our membership assessment supports the National and State Leagues at \$49/member (\$31 National and \$18 State).

** High school or postsecondary student enrolled at least part time in an accredited institution.

_____ I am not a member, but would like to support the League with my contribution as indicated below.

I have enclosed a contribution of \$ _____ for the League General Fund.

I have enclosed a contribution of \$ _____ for the League Education Fund***

*** This contribution is tax-deductible. Write check to "LWV Education Fund."

PLEASE PRINT

Name(s) _____

Address _____

Telephone _____ Email _____

As a League member or supporter, I would like to help support League activities by participating as follows:

- | | |
|---|--|
| <p>General Membership Meetings:</p> <p>___ Set up and/or tear down</p> <p>___ Hospitality (provide coffee/tea/dessert)</p> <p>___ Taking notes/writing up report of meeting</p> <p>Membership:</p> <p>___ Recruitment</p> <p>___ Mentor/follow-up with new members</p> <p>___ Provide a ride to a fellow member</p> <p>___ Phone members without internet access about special updates</p> <p>Voter Services:</p> <p>___ Register voters</p> <p>___ Help with voter education</p> | <p>Promotion of League to our Community:</p> <p>___ Public speaking</p> <p>___ Represent League at community events</p> <p>___ Observer corps (attend/report on government meetings)</p> <p>___ Help with research for League studies on issues</p> <p>___ Serve on the Board of Directors</p> <p>I have the following skills:</p> <p>___ Editing articles/reports</p> <p>___ Database management</p> <p>___ Microsoft Word / Excel / Quickbooks</p> <p>___ Website/Social Media design/management</p> <p>My interests include:</p> <p>_____</p> |
|---|--|

PO BOX 1072 • LAWRENCE KS 66044-1072

President@lawrenceleague.com • www.lawrenceleague.com
www.facebook.com/lwvldc • www.twitter.com/lwvldc